

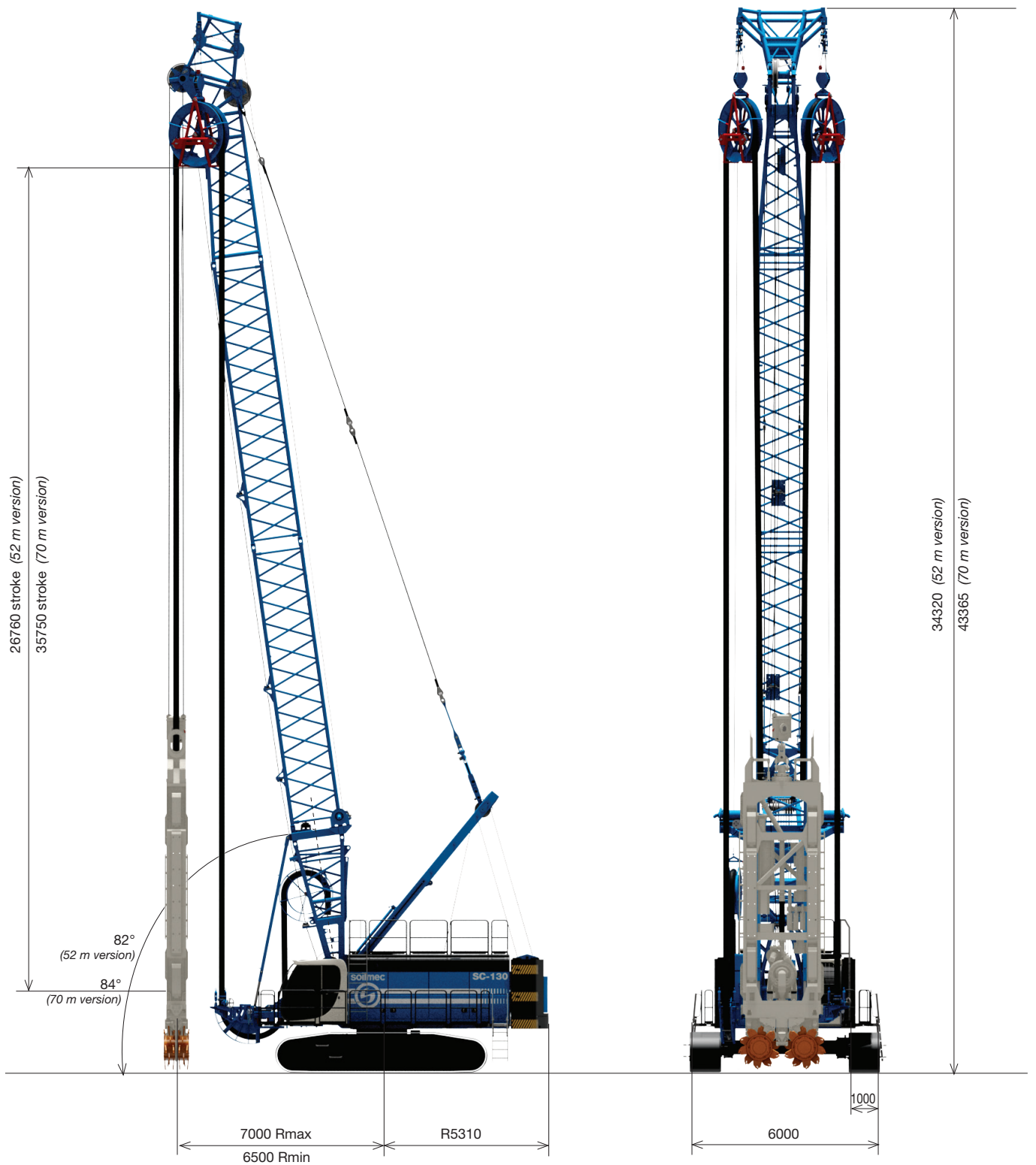
Hydromill

SC-130 Cougar



soilmec 
Drilling and Foundation Equipment

SC-130 Cougar Hydromill



SC-130 Cougar

Operating weight - 70/52 m version	175000/165000 kg	385800/363760 lb
Max depth - 70/52 m version	70/52 m	230/170 ft
Module rotation	90°	90°
Milling unit	SH-30 / SH-40	SH-30 / SH-40

SC-130 Cougar Hydromill

TECHNICAL DATA SHEET

Diesel engine	CAT C18	CAT C18
Max Rated Power	563 kW @ 1800 rpm	755 HP @ 1800 rpm
- Engine conforms to exhaust emissions standard	EU Stage V / US EPA Tier 4f	<i>EU Stage V / US EPA Tier 4f</i>
- Fuel tank capacity	1100 l	290.6 US gal
- Hydraulic oil tank capacity	1250 l	330.2 US gal
Hydraulic system		
- Main pums max flow	2x430 + 325 l/min	2 x 114 + 86 US gal
Main winches		
- Type	Controlled descent	<i>Controlled descent</i>
- 1st layer line pull (nominal load)	350 kN	78682 lbf
- Rope diameter	36 mm	1.42 in
- Rope speed (max)	38 m/min	125 ft/min
- Max rope length on winch	144 m	472 ft
Boom		
	Lattice type	<i>Lattice type</i>
- Length (52-70 version)	29,5 - 38,5 m	97 - 126ft
- Extension length	3 - 6 - 9 m	10 - 20 - 30 ft
Undercarriage		
	Variable gauge	<i>Variable gauge</i>
- Overall width	6000 mm	236.22 in
- Overall length of crawlers	6700 mm	263.78 in
- Track shoe width	1000 mm	39.37 in
- Track shoe style	Triple grouser	<i>Triple grouser</i>
- Travel speed	0,8 - 1,6 km/h	0.5 - 1.0 mph
- Traction force	722 kN	162309 lbf
Upper structure		
- Turret width	3500 mm	137.79 in
- Slewing speed	1 rpm	1 rpm
- Swing tail radius	5310 mm	209 in

STANDARD EQUIPMENT

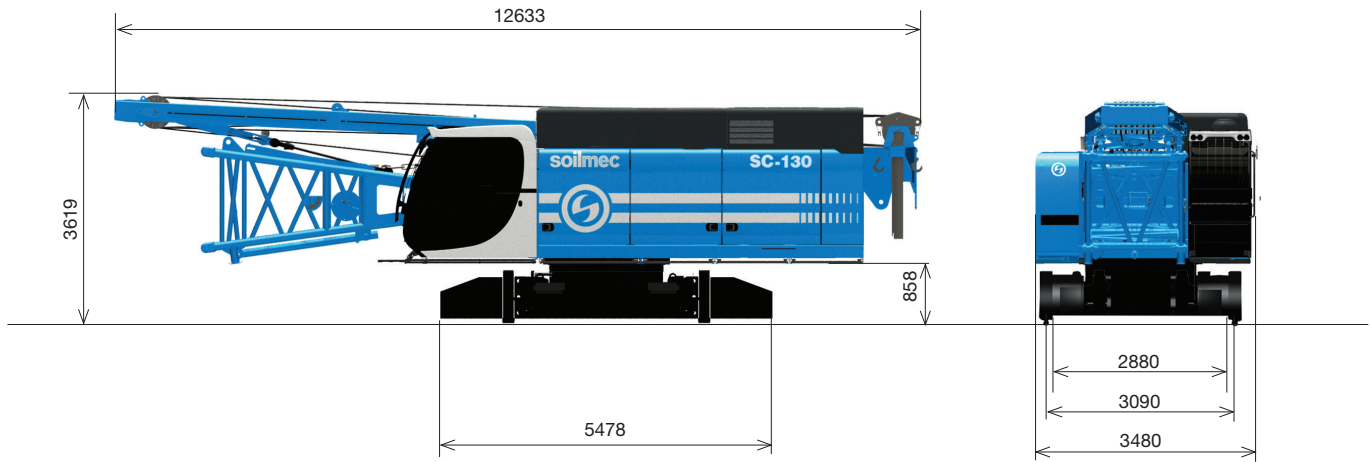
- Hydro-clean micro filtration with water separation
- In cab warning alarm in case of hydraulic oil contamination
- Electro-proportional control system
- DMS system for a total control over machine performance and excavation parameters
- DMS PC software for production data analysis and report
- 4 video-cameras
- Lashing Points on undercarriage for transport
- Assembly mode selector for safe rigging / de-rigging
- Remote Control Board for assembly disassembly and transport phase
- Remote control board for teeth changing
- Heat control system (Noise reduction)
- High efficiency hydraulic layout for energy saving
- Refueling pump
- 90° swivel rotation system
- Platform catwalk handrails
- Remote control board for winch rope changing
- Remote control board for emergency recovery of the milling unit

OPTIONAL EQUIPMENT

- Hydraulic oil filtering external group complete with oil contamination indicator
- DMS PC 3D option for panels overlap control
- Diesel engine Tier 2 CAT C18 571 kW
- Fixed gauge undercarriage with removable side frames
- Flat track shoes
- Automatic greasing kit
- Complete safety equipments for CE request of EN16228
- Measuring system for oil drain flow
- Measuring system for mud flow
- Customer kit - impact wrench, greasing kit on base carrier, water pump c/w winder and lance

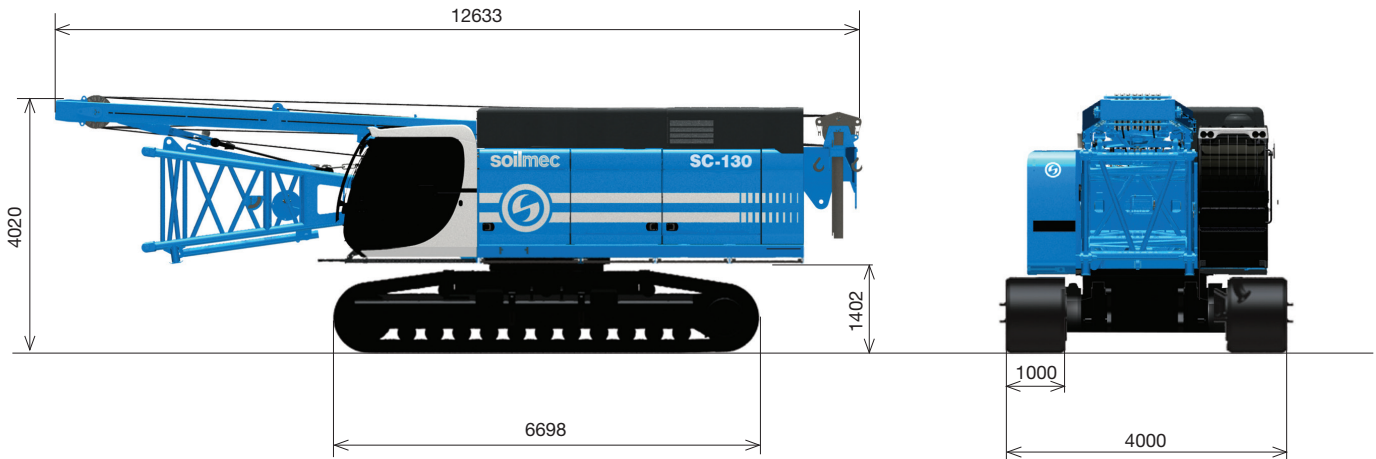
SC-130 Cougar Hydromill

TRANSPORT, DIMENSIONS AND WEIGHTS



Main machine (SC-37 FW undercarriage)

Width	3500 mm	137.8 in
Weight	48000 kg	105821 lb



Main machine (SC-39 FW undercarriage)

Width	4000 mm	157.5 in
Weight	78000 kg	171961 lb

Counterweight (42t / 92593 lb)

Base width	1125 mm	44.3 in
Base weight	17000 kg	37480 lb
Block width	996 mm	39.2 in
Block weight	1550 kg	3420 lb

Sideframes

Width	1000 mm	39.4 in
Weight	14400 kg	31750 lb

This brochure has been edited and distributed by SOILMEC Spa. The present document cancels and override any previous ones. This brochure shall not be distributed, reproduced or exhibited without SOILMEC Spa. authorization in accordance with to SOILMEC web site disclaimer condition.

SOILMEC Spa distributes machinery and structures all over the world, supported by SOILMEC Spa subsidiary companies and dealers. The complete Soilmec network list is available on the web site www.soilmec.it